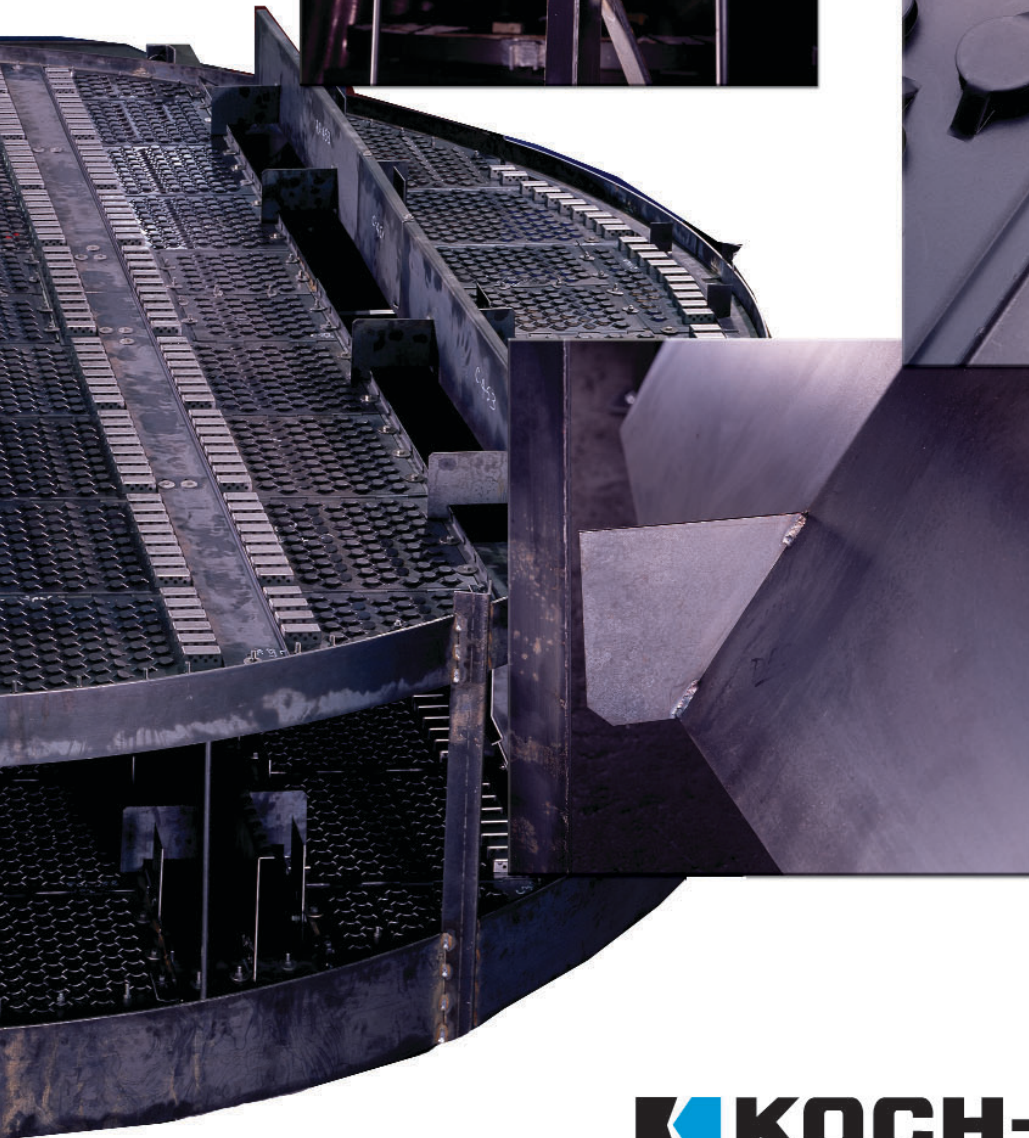
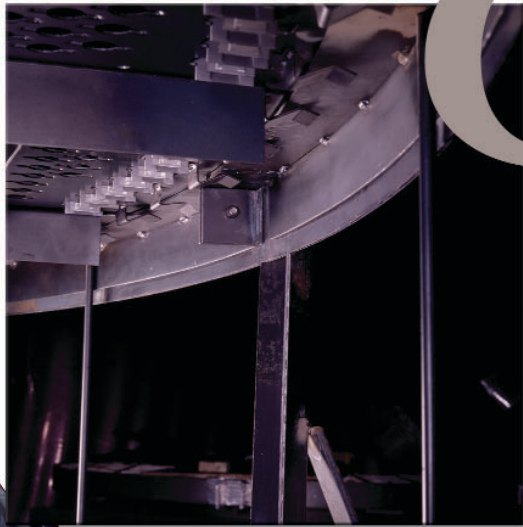


# Distillation Column Process Improvements You Can't Prosper Without Them!

*Reduce the time, cost, and complexities of your next  
revamp with*

**Omni-Fit<sup>®</sup>**  
**TECHNOLOGY**



Tray and tray support  
designs that facilitate  
column revamps  
and performance  
improvements

**KOCH-GLITSCH LP**

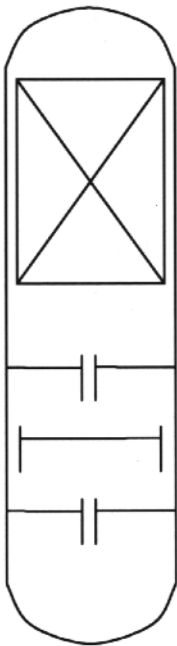
# When distillation column process improvements require radical changes to tower internals you need ....



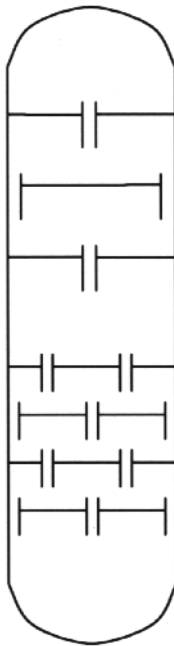
Omni-Fit is a toolbox of mechanical engineering designs for reducing the cost and down-time of revamps. The toolbox includes expansion rings, pedestal supports, and innovative tray designs. Welding on the existing tower can be minimized or eliminated. Efficiency and capacity enhancements can be achieved by using Omni-Fit technology for your next turnaround project.

## Transform your column

**Before**



**After**



## Omni-Fit can be used to:

- Increase theoretical stages
- Change tray spacings
- Modify downcomer sizes or configurations
- Install multi-pass SUPERFRAC® trays
- Change tray orientation
- Eliminate welding
- Shorten turnarounds
- Replace packing
- And more

## **KOCH-GLITSCH LP**

P.O. Box 8127  
WICHITA, KS 67208-0127  
4111 E. 37th Street North  
**WICHITA, KS 67220**  
TEL (316) 828-5110  
FAX (316) 828-5263

4900 Singleton Blvd.  
**DALLAS, TX 75212**  
TEL (214) 583-3000  
FAX (214) 583-3377

**Koch-Glitsch Italia S.r.l.**  
Via Tonale 50,  
Casella Postale 13  
24061 Albano S. Alessandro  
**BERGAMO, ITALY**  
TEL +39-035-328611  
FAX +39-035-328600

Koch-Glitsch Japan Corp.  
7th Floor, Kss Gotanda  
Bldg 21-8  
Nishi Gotanda 1 – chome  
**SHINAGAWA-KU, TOKYO**  
**141-8538, JAPAN**  
TEL +81-3-5435-8560  
FAX +81-3-3491-3523

Koch-Glitsch (UK) Ltd  
King Street  
**FENTON, STOKE-ON-TRENT**  
ST4 2LT England  
TEL +44-1782-744561  
FAX +44-1782-744330

For a complete listing of  
Koch-Glitsch offices,  
visit us on the internet:  
[www.koch-glitsch.com](http://www.koch-glitsch.com)

For emergencies:  
**1-888-KOCH-911**

OMNI-FIT® is a registered trademark of Koch-Glitsch, LP

NOTE: The information contained in this bulletin is believed to be accurate and reliable but is not to be construed as implying any warranty or guarantee of performance.

Bulletin OF-I IM0503E Printed in U.S.A.  
© Copyright 2003 Koch-Glitsch, LP