

Stabilisers for Crude Oil & Condensate

Our Experience

Eta offers customised Crude Oil and Condensate Stabiliser packages for onshore and offshore applications. With over 10 years experience of supplying packages, Eta maintains project management and quality assurance standards that are in compliance with the requirements of the leading oil and petrochemical companies across the globe.

Eta's optimised process design and comprehensive project management can produce a cost-effective turnkey or fully skid-mounted package plant.

Eta process expertise is backed by the full range of high-efficiency KOCH-GLITSCH® tower internals and media.

Our Technologies

Stabilisers are installed for two purposes:

- Sweetening (reduce the H₂S content)
- Removal of dissolved volatile gases to meet pipeline, storage, and transportation vapour pressure requirements

Eta offers the complete design of the stabiliser system for onshore and offshore applications.

STABILISER COLUMN

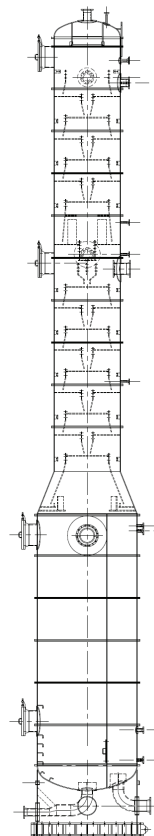
Packed or trayed columns are supplied to suit the required specifications and operational conditions.

HEAT EXCHANGE

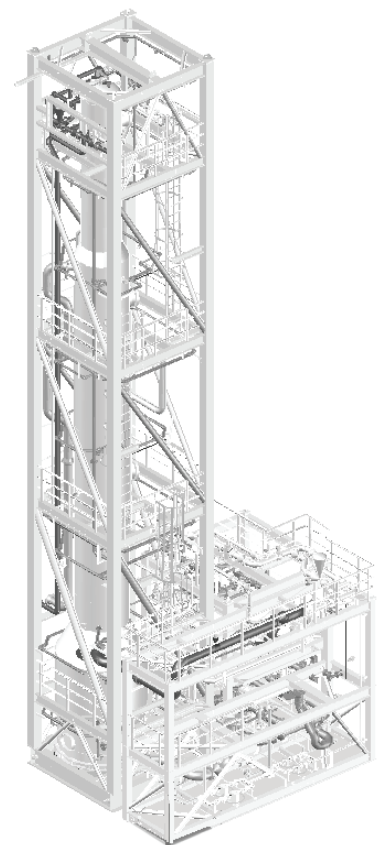
Forced or natural convection heat exchangers are designed and supplied depending on the required duty and space limitations.

PUMPING, FLUID HANDLING, INSTRUMENTATION / CONTROL

Full, skid-mounted packages can be supplied, incorporating all major equipment items as well as interconnecting pipework, valves, and instrumentation. PLC-based control systems can be mounted directly in the hazardous area or remotely in a safe area. Motor control systems can also be provided for a complete turnkey system.



TYPICAL
STABILISER
VESSEL



TYPICAL
STABILISER
PACKAGE



Benefits

- Customised design
- Design & supply of full PLC control systems with user interface via HMI
- Reduced on-site time
- Compact turnkey systems for Platform, FPSO, and onshore installation
- Easy operation and low maintenance
- High process efficiency
- Ongoing support throughout the life of the equipment

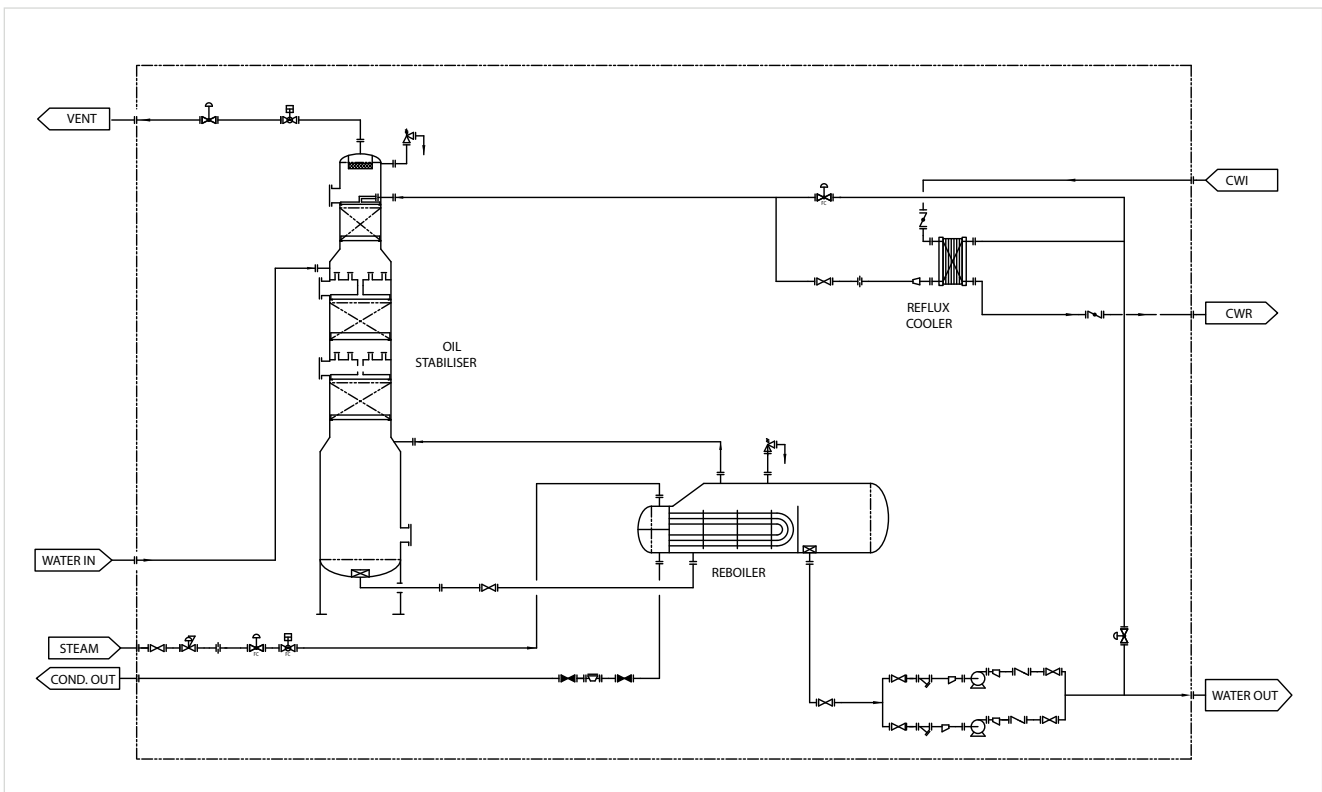
References

Eta has extensive reference lists available upon request.

Continuous Support & Service

Eta's engineers are closely involved in all aspects of your project starting with process evaluation, integration and optimisation, followed by detailed process and mechanical engineering, E&I and design through complete fabrication, assembly, inspection, testing, and commissioning as well as post-commissioning operations service.

TYPICAL STABILISER FLOW SHEET



Please contact us for further information.

Eta Process Plant

A Division of Koch Chemical Technology Group Ltd.

First Floor, Three Counties House

Festival Way

Stoke-on-Trent

ST1 5PX

United Kingdom

Tel : +44 (0)1782 744561 | Fax : +44 (0)1782 602293

E-mail : sales@etapp.com | Website : www.etapp.com

For related trademark information, visit www.koch-glitsch.com/trademarks.
© 2012-2019 Koch-Glitsch, LP. All rights reserved. 104-Rev-1 01.2019

KOCH-GLITSCH

YOU CAN RELY ON US.