



VORSOMAX

Cyclone Mist Eliminator and Cyclonic Inlet Device

 KOCH-GLITSCH.

Reduce new vessel size or increase capacity in high-pressure applications.

VORSOMAX® cyclone mist eliminators consist of single or multiple elements mounted onto a deck plate. Each element contains an activator which generates centrifugal force to provide the separation of vapor and liquid(s). The units are provided in easily-handled subassemblies, which are installed through vessel manways. If the vessel is equipped with a body flange, the elements may be consolidated into a single piece for installation via the body flange.

EXTREMELY HIGH GAS CAPACITY

VORSOMAX cyclone mist eliminators deliver very high gas-handling capacity combined with excellent droplet removal efficiency even at elevated pressures.

I NEW CONSTRUCTION

For grassroots projects involving high pressure separators, cyclone mist eliminators can provide the lowest overall cost solution by minimizing the diameter and height requirements of the vessel. This reduction in footprint can result in several benefits to the end user such as: faster vessel delivery, lower transportation costs, simplified installation and lower overall vessel costs.

I RETROFITS

For existing high-pressure separators, where significant additional capacity is required, cyclone mist eliminators can extend the gas capacity well beyond any other mist elimination technology available from Koch-Glitsch.

I BENEFITS

- Minimizes grassroots vessel diameter and weight, which is particularly important in high-pressure applications
- Ideal for debottlenecking existing separators for capacity upgrades
- High gas turndown
- Easily installed through vessel manways

I MATERIALS OF CONSTRUCTION

- All common metal alloys

I DESIGN PARAMETERS

The design and selection of cyclone mist eliminators are based on:

- Gas and liquid physical properties
- Liquid loading
- Desired efficiency and pressure drop



DEMISTER-PLUS type MC-V mist eliminators with VORSOMAX® cyclonic inlet device and VORSOMAX® cyclone mist eliminator

The advanced design DEMISTER-PLUS mist eliminator can achieve even greater increases in capacity over conventional mist elimination equipment. The well-proven DEMISTER-PLUS mist eliminator design features a feed inlet device and a one- or two-stage mist eliminator, combining the efficiency of the DEMISTER® mist eliminator with the high throughput capacity of the VORSOMAX cyclone mist eliminator.

I FUNCTION OF SEPARATOR INTERNALS

1. Gas and liquid enter the feed nozzle of the separator. As vapor and liquid enter the manifold of the VORSOMAX cyclonic inlet device, internal distributors peel material and tangentially feed separation cans that are arranged around the manifold. The centrifugal force generated inside each of the separation cans drives the high efficiency removal of liquid from vapor, such that the entrainment load to downstream mist elimination devices is reduced.
2. The mist-laden vapor then passes through a horizontally-mounted YORKMESH knitted wire mesh agglomerator, which can be supplied with or without a separate liquid drainage system. The agglomerator enlarges the entrained droplets such that they are easier to remove by the downstream mist eliminator.
3. The vapor and remaining mist enter the VORSOMAX cyclone mist eliminator.
 - The vapor and mist enter the bottom of the cyclone (inlet) and flow through an activator element that imparts a very high centrifugal force. The droplets are flung outward and are coalesced into a liquid film on the cyclone inner wall.
 - The liquid film and a small portion of the vapor flow are purged out of the cyclone through openings in the wall into an outer chamber where the gas and liquid separate.
 - The bulk vapor is discharged from the top of the element (outlet).
 - The collected liquid is drained from the cyclone deck via downcomer pipe.

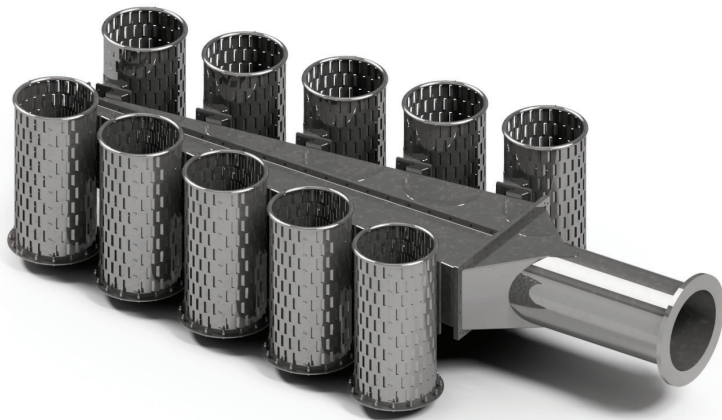
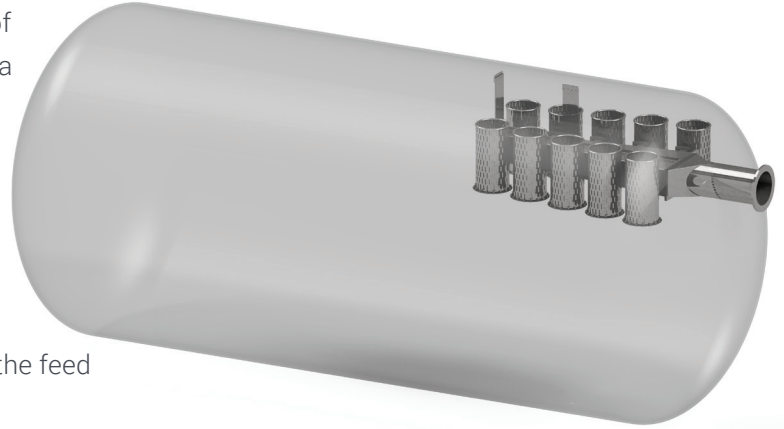


VORSOMAX® CYCLONIC INLET DEVICE

The VORSOMAX cyclonic inlet device is a patent-pending inlet device that delivers good separation of vapor and liquid phases. It consists of a manifold and a series of separation cans, in which centrifugal force is generated to provide the vapor-liquid separation.

VORSOMAX cyclonic inlet device decreases the momentum of the feed stream entering an inlet nozzle. This is performed in a controlled manner which allows:

- Removal of bulk liquid and some solids
- Good distribution of vapor over downstream internals
- Minimization of droplet shatter, which prevents creation of additional fine entrainment
- Reduction of forces acting on liquid surface below the feed



BENEFITS

- Due to high efficiency separation of liquid from vapor, reduces liquid load to mist elimination equipment
- Foam breaking or suppression
- Compact design compared to conventional inlet cyclones
- Prevents shear forces acting on liquid levels which can lead to re-entrainment of previously collected liquid
- Modular construction allows for easy installation through vessel manways
- Custom engineered for vertical or horizontal vessels

Koch-Glitsch Corporate Offices

WORLDWIDE HEADQUARTERS

Koch-Glitsch, LP

4111 East 37th Street North | Wichita, KS 67220 | United States
316-828-5110 Tel

EUROPE

Koch-Glitsch Italia S.r.l.

Via Torri Bianche | 3A 20871 Vimercate MB | Italy
+39-039-638-6010 Tel

Koch-Glitsch BVBA (KOCH-OTTO YORK® Separations Technology)

Bijkhoevelaan 26 | B-2110 Wijinegem | Belgium
+32 (0) 3-647-2847 Tel

ASIA

Koch Chemical Technology Group Singapore Pte. Ltd.

260 Orchard Road, #11-01/09 | The Heeren | Singapore 238855
+65-6831-6500 Tel

Koch-Glitsch (a division of Koch Chemical Technology Group India Pvt. Ltd.)

10th Floor, Corporate Park II | Sion-Trombay Road | Chembur, Mumbai 400 071 | India
+91 (0) 22-6771-7171 Tel

For a complete list of our offices and facilities, visit www.koch-glitsch.com.

For related trademark information, visit www.koch-glitsch.com/trademarks.
© 2015-2019 Koch-Glitsch, LP. All rights reserved.

Bulletin VMX-01. Rev. 09-2019. Printed in U.S.A.

EMERGENCY NUMBERS

UNITED STATES/LATIN AMERICA:

888-KOCH-911 (mass transfer), 316-207-7935 (mist elimination),
or your local Koch-Glitsch office.

CANADA:

905-852-3381 (Uxbridge, Ontario).

EUROPE/MIDDLE EAST/AFRICA:

+39-06-928-911 (Italy), +44 (0) 1782-744-561 (United Kingdom),
or your local Koch-Glitsch office.

ASIA:

+65-6831-6500 (Singapore) or your local Koch-Glitsch office.

Legal Notice

The information contained in this bulletin is believed to be accurate and reliable,
but is not to be construed as implying any warranty or guarantee of performance.

KOCH-GLITSCH

YOU CAN RELY ON US.